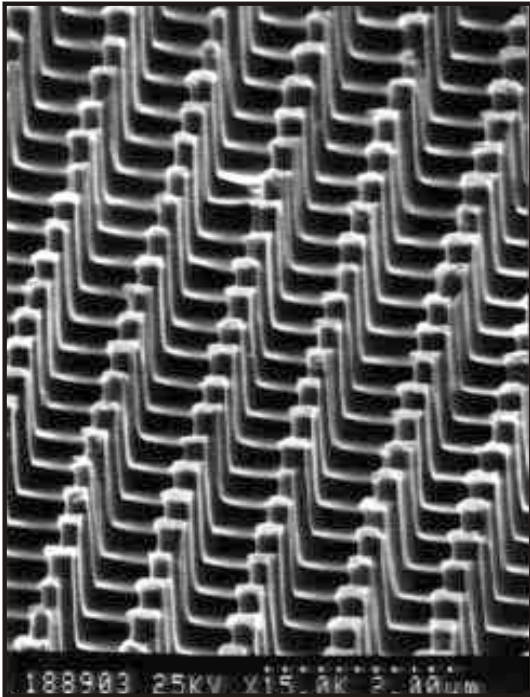




Plasmalab Data

MORIE: GaAs-Quantum Dots



(Courtesy of the Cavendish Laboratories, Cambridge)



Plasmalab 80 Plus

Plasmalab System 100

Plasmalab System 133



Technology:

- RIE-Mode: 13.56 MHz
- Shower Head Gas Inlet
- CH₄ / H₂ based process (MORIE)

Results:

- Rate: 30 nm/ min
- Mask: negative e-beam Resist
- Aspect Ratio: 5:1
- Dot Size: 0.2 μm x 0.2 μm

