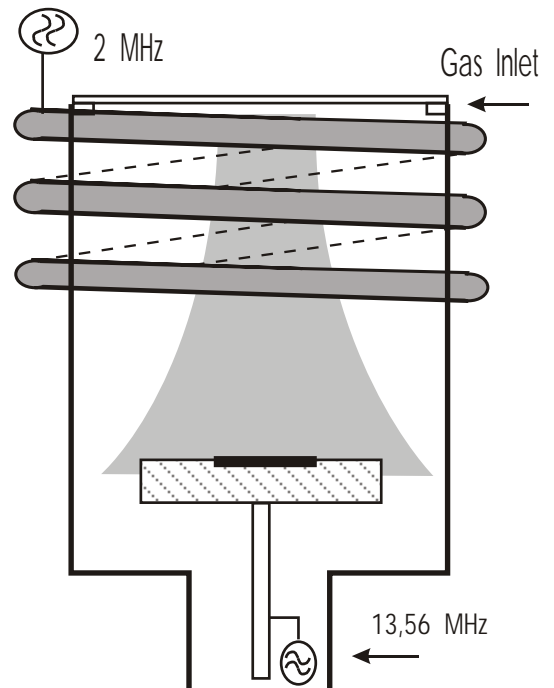
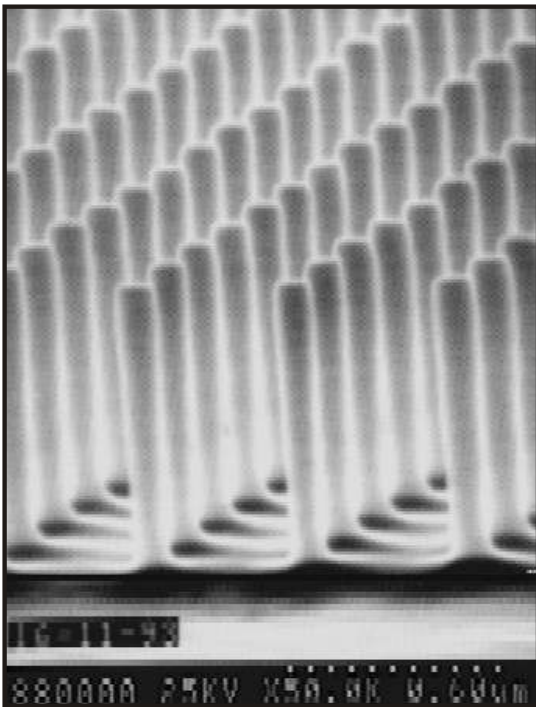


Plasmalab Data

ICP - RIE: Quantum Dots



Courtesy of Uni Glasgow, Dr Y.P. Song and Prof. C.D.W. Wilkinson*

Plasmalab System 100

Plasmalab System 133

Plasmalab 80 Plus



Technology:

Inductive Coupled Plasma ICP - RIE*
Cl based process

*original work by ECR, see:
http://www.oxfordplasma.de/technols/rie_ecr.htm

Results:

Low damage process:
Anisotropic etching
No residues