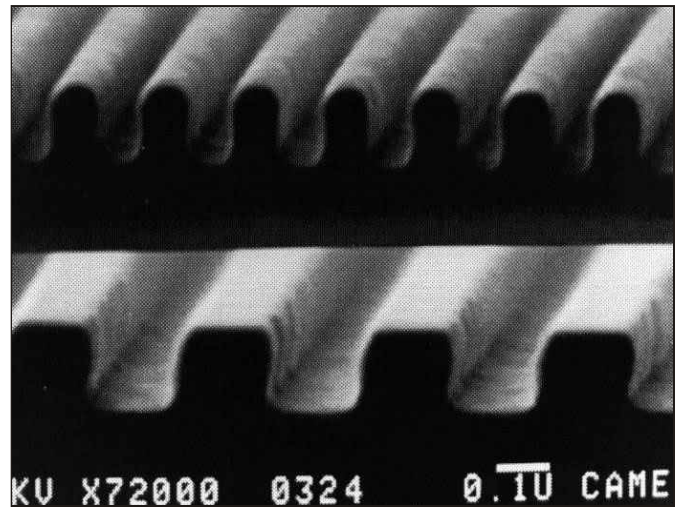
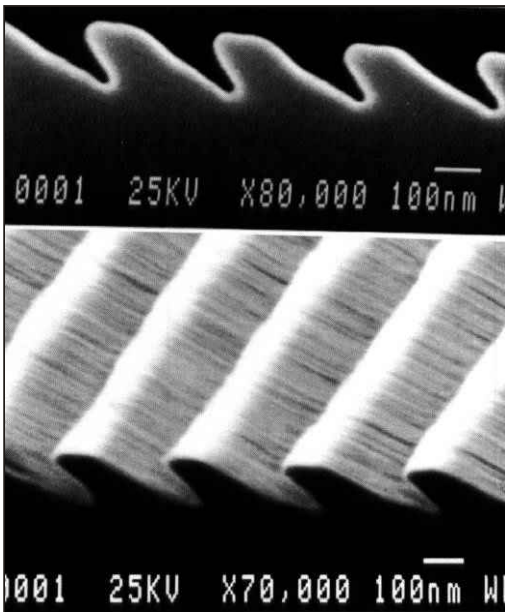
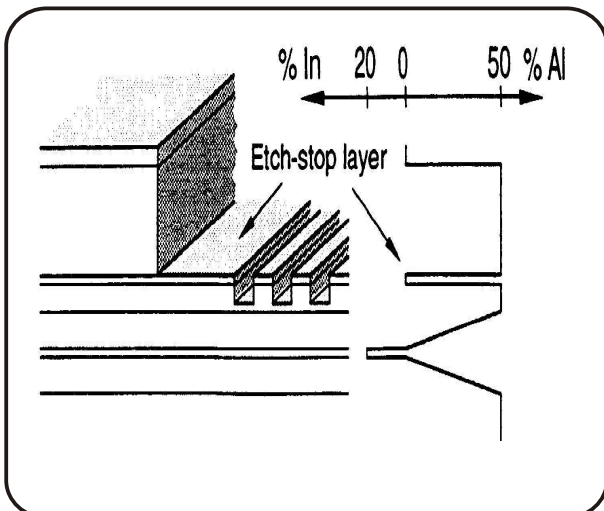
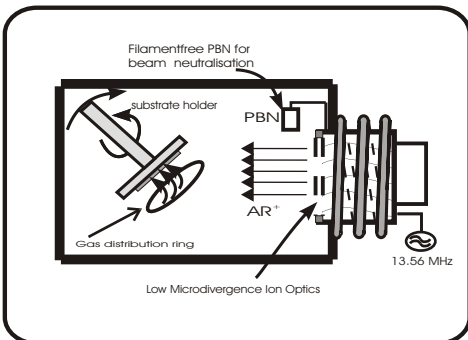


# *Ionfab Data*

## *InGaAs / AlGaAs Grating Coupled Surface Emitting Semiconductor Lasers - CAIBE*



Courtesy of Dept. Of Optoelectronics,  
Chalmers University of Technology, Göteborg



### **Technology:**

- Etch Mode: CAIBE (Cl<sub>2</sub>, Ar)
- Normal and tilted ion-beam angle
- LN<sub>2</sub> Meissner coil
- e-beam patterned PMMA etch mask

### **Results:**

- Rate : 150 nm / min
- Excellent optical properties
- > 60% outcoupling efficiency



***Ionfab 300 Plus***